

New SpeedDIAL Catalog Quick Reference

In an effort to expand catalog coverage and product offering, to increase speed to market, to increase catalog accuracy, and offer additional value added information to our customers, WORLDPAC together has embarked on the single largest programming project in WORLDPAC's history to date.

We believe that WORLDPAC customers will benefit by having timely access to the items they need to support their customer's needs and from better integration with shop management programs due to our extensive catalog improvements and increased catalog coverage.

Next Generation Quick Reference

- [Section 1 - Navigation Basics](#)
- [Section 2 - Suggested configuration](#)
- [Section 3 - Short Cuts](#)
- [Section 4 - Catalog Navigation](#)

Section 1 - Navigation Basics

Pressing the Alt key will always reveal available shortcuts as an underline of the command letter

Tab will always move the cursor to the next active field or window

Back Tab will always move the cursor to the previous active field

Esc will always close any open window and return focus to the previous window

Pressing F2 will open the model selection window

Pressing the space bar will select the highlighted part type and place a check in the check box

Hovering over a warning sign will display application notes without going to the details screen.

If there is no other information needed, hovering over a checked box in the part type window will display the OE part number and the in some cases, recommended quantity per car.

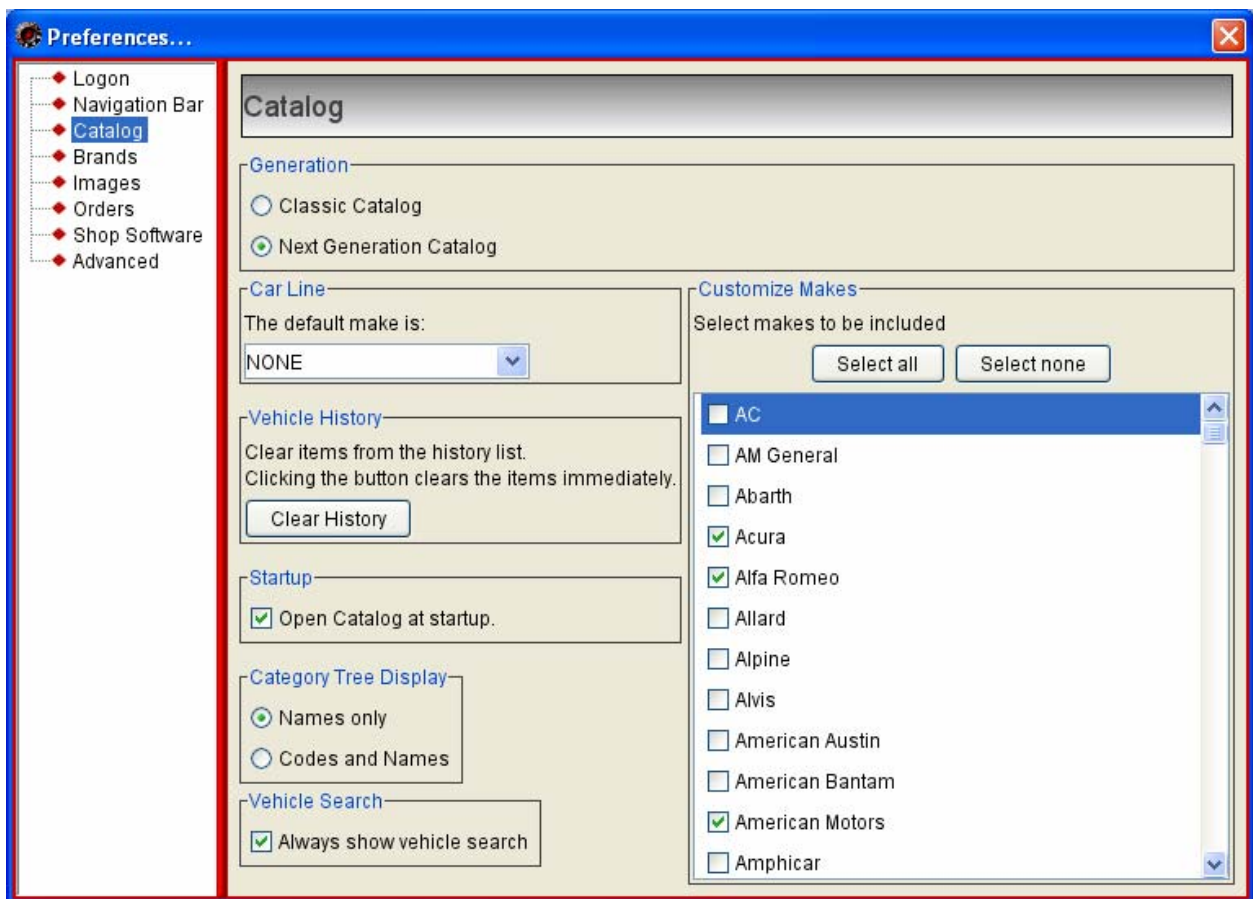
Section 2 - Suggested configuration

Use the view menu option to select the preferences option

Match the options shown below.

Customize Makes

To reduce the number of car manufacturers displayed in the Makes dropdown, use the Select none button to deselect all Makes then select the Makes desired. When entering application information, only selected makes will be available in the Makes dropdown.



Section 3 - Short Cuts

Next Generation Catalog Keyboard Navigation

F-Keys by Description

Close Search window

F3

Close Wizard

F3

Expand/collapse Category node	F4
Minimize Catalog	F3
Order Selected Items Using Brand Selection	F6
Price from Wizard	F9
Reset Catalog	F5
Tab Back	/ (keypad)
Tab Forward	* (keypad)
VIN Search button in Catalog	F2

F-Keys by Function

* (keypad)	Tab Forward
/ (keypad)	Tab Back
F2	VIN Search button in Catalog
F3	Minimize Catalog
F3	Close Wizard
F3	Close Search window
F4	Expand/collapse Category node
F5	Reset Catalog
F6	Order Selected Items Using Brand Selection
F9	Price from Wizard

Catalog by Description

Close open Windows	ESC
ENTER Accept, Price	ENTER Accept, Price
Expand/Collapse Category tree node	L/R ARROW
Help	ALT-H
Multi select/de-select Category list items	CTRL w/LEFT MOUSE CLICK
Navigate to next item in list, or tree node	UP/DOWN ARROW
Navigate to text field, list or tree node	TAB/SHIFT-TAB
Open VIN/Model Search	ALT-A
Order Selected Items Using Brand Selection	ALT-O
Price this product(s)	ALT-P
Reset Catalog	ALT-R
Reset Categories	ALT-E
Search by Part Description	ALT-S
Select/De-select Part Type	SPACE Bar
Set cursor to Make	ALT-M
Set cursor to Model	ALT-D
Set cursor to Year	ALT-Y
View Catalog Options	ALT-V
View History	ALT-I
View Wizard/Details	ALT-L

Catalog by Function

ALT-A	Open VIN/Model Search
ALT-D	Set cursor to Model
ALT-E	Reset Categories
ALT-H	Help
ALT-I	View History
ALT-L	View Wizard/Details
ALT-M	Set cursor to Make
	Order Selected Items Using Brand Selection
ALT-O	Price this product(s)
ALT-P	Reset Catalog
ALT-R	Search by Part Description
ALT-S	View Catalog Options
ALT-V	Set cursor to Year
ALT-Y	Multi select/de-select Category list items
CTRL w/LEFT MOUSE CLICK	ENTER Accept, Price
ENTER Accept, Price	Close open Windows
ESC	Expand/Collapse Category tree node
L/R ARROW	Select/De-select Part Type
SPACE Bar	Navigate to text field, list or tree node
TAB/SHIFT-TAB	Navigate to next item in list, or tree node
UP/DOWN ARROW	

Wizard by Description

Check/UnCheck Part Detail or Question items	SPACE BAR
Close Window	ESC
Navigate Part Detail or Question items	UP/DOWN ARROW
Next Tab	ALT-N
Open Buyer's Guideg	ALT-G
Order this product(s)	ALT-O
Previous Tab	ALT-V
Price this product(s)	ALT-P
Reset Catalog	F5

Wizard by Function

ALT-G	Open Buyer's Guideg
ALT-N	Next Tab
ALT-O	Order this product(s)
ALT-P	Price this product(s)
ALT-V	Previous Tab
ESC	Close Window
F5	Reset Catalog
	Check/UnCheck Part Detail or Question items
SPACE BAR	Navigate Part Detail or Question items
UP/DOWN ARROW	

Section 4 - Catalog Navigation

WORLD PAC speedDIAL Catalog

Vehicle Search/MIN His

Model Year 2003 Make Mazda Sub Model: i Engine: 2.3 L4
Model 6

Category Reset **Part Types / Positions** Sold With

- Replacement Part
- Accessory
- Air Intake
- Body Electrical
- Body Mechanical & Trim

Enter the last two characters for the vehicle model year. Once a valid year is entered the year selected will high light. Press TAB or the * on the Ten Key Pad to the right of your keyboard to move to the cursor to the next field

Type the manufacturer name for vehicle. Once a valid manufacturer is entered the associated manufacturer selected will high light. Press TAB or the * on the Ten Key Pad to the right of your keyboard to move to the cursor to the next field

Type the model name for vehicle. Once a valid model for the selected year and manufacturer is entered, the associated model selected will high light. Press TAB or the * on the Ten Key Pad to the right of your keyboard to move to the cursor to the sub models associated with the selected model

WORLD PAC speedDIAL Vehicle Search-Mazda

VIN

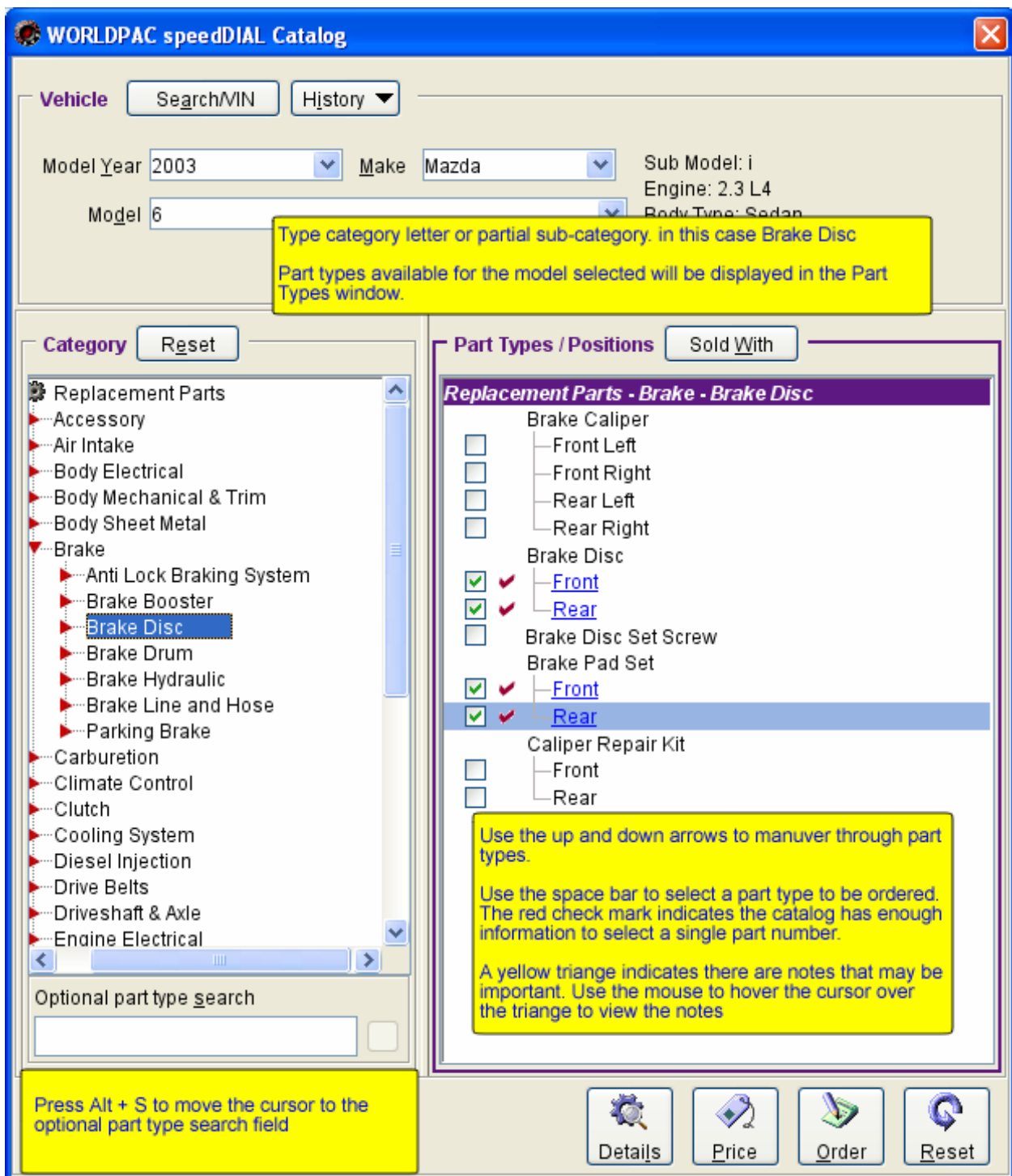
Search Select Cancel Print

Year	Model ▲	Engine ID	Chassis ID
2003	6 S, 3.0 V6, Sedan		
2003	6 i, 2.3 L4, Sedan	MZR	

The WORLD PAC Catalog Vehicle Search opens.

Use the up and down arrows to select the correct model. Press enter to move the cursor to the Category window.

Press F2 from any point in the catalog to return to the Vehicle Search to change the sub-model



Once Part types have been selected, press enter or click the Price button to send all selected part types with a red check mark to the price and availability screen.

If any part types selected requires additional information to narrow the choice to one part number the customer will be transferred to the details window to provide the information required

- Select Parts
- ✓ Brake Disc-Front
 - ✓ Brake Disc-Rear
 - ✓ Brake Pad Set-Front
 - ✓ Brake Pad Set-Rear



GK2Y-33-25XF



Use the Tab key or the* key on the number pad to move from window to window

Use the up and down arrows to maneuver through part types.

Use the space bar to select a part type to be ordered.

The red check mark indicates the catalog has enough information to select a single part number.

A yellow triangle indicates there are notes that may be important

Press Alt-P or press enter or press F9 to return the selected part types to the order entry screen. Press Esc to return to the main catalog page

Navigation buttons: Prey (left arrow), Next (right arrow), Price (tag icon), Order (shopping cart icon)